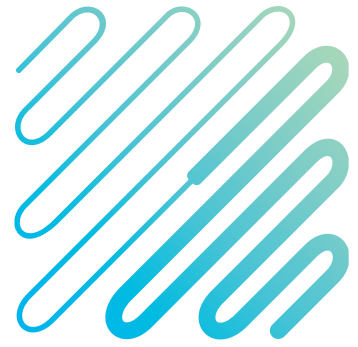


cabmill

M A C H I N E R Y



LEADING ADDRESS
IN RECYCLING

**PRODUCT
CATALOG**

cabmill MACHINERY



About Us

It is of vital importance to meet the raw material needs of modern industry by recycling waste materials in order to preserve our natural resources, reduce energy consumption and leave a livable world to future generations.

With this awareness, our company established in 2012 under the name CABMILL MACHINERY, thanks to its accumulated technical knowledge, manufactures recycling machines that operate with low cost and high efficiency, capable of separating copper and aluminum from plastic in cables.

Our company has gained an important place in the market with its machines manufactured from robust, high-quality materials and equipped with high technical specifications enabled by modern technology, suitable for both large and smaller capacity facilities. Requiring lower investment costs compared to equivalent products, occupying less space, and operating with high efficiency while consuming less energy, our machines have become the preference of our customers all around the world.

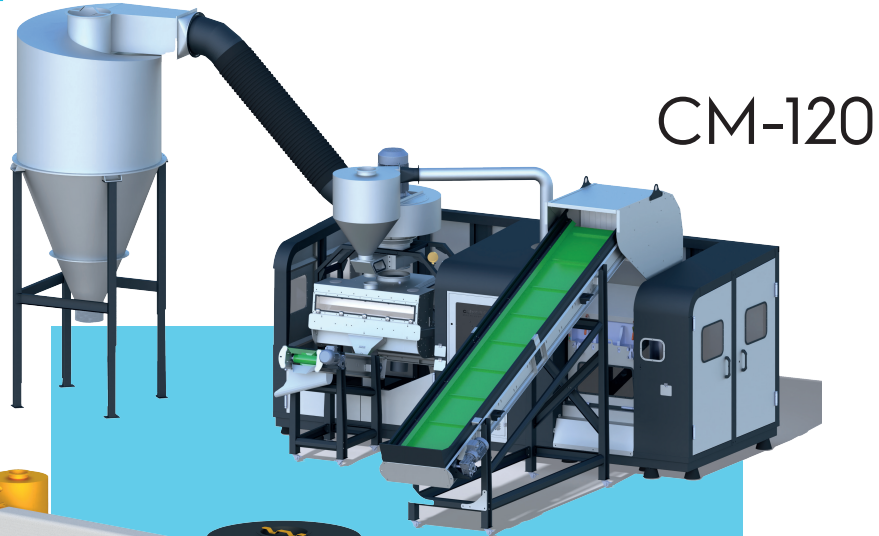
With its R&D team, our company produces solutions by utilizing all the opportunities offered by modern technology to meet the changing needs of the industry. It has embraced development as its motto and continues to increase its brand value day by day.

Ensuring that our customers quickly get returns on their investments in our machines is one of the cornerstones of our business model. For this reason, along with the robustness and performance of our machines, we are fully confident that our customers' investments will pay off for them as soon as possible.

Considering customer satisfaction as the greatest gain, our company has ensured customer satisfaction and earned their trust through post-sale installation support, spare parts support, and technical assistance we provide.

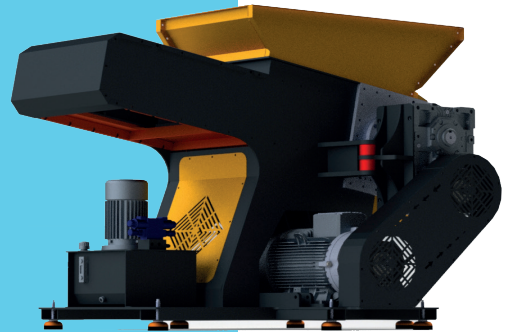
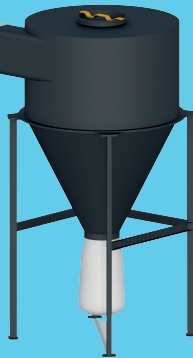
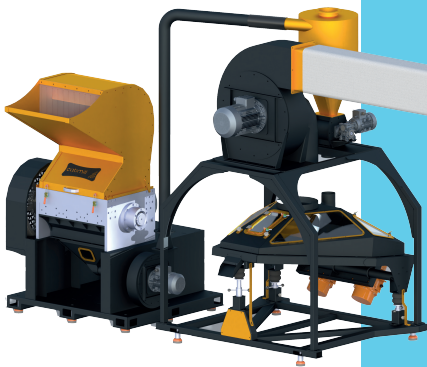
Thanks to our business ethics, corporate culture, and values, our company continues its journey in the business world as a professional and reliable institution, proudly representing its country with great pride worldwide.

CM PROFESSIONAL



CM-120

CM-12



cabmill
M A C H I N E R Y

FEATURES OF THE PRODUCTS

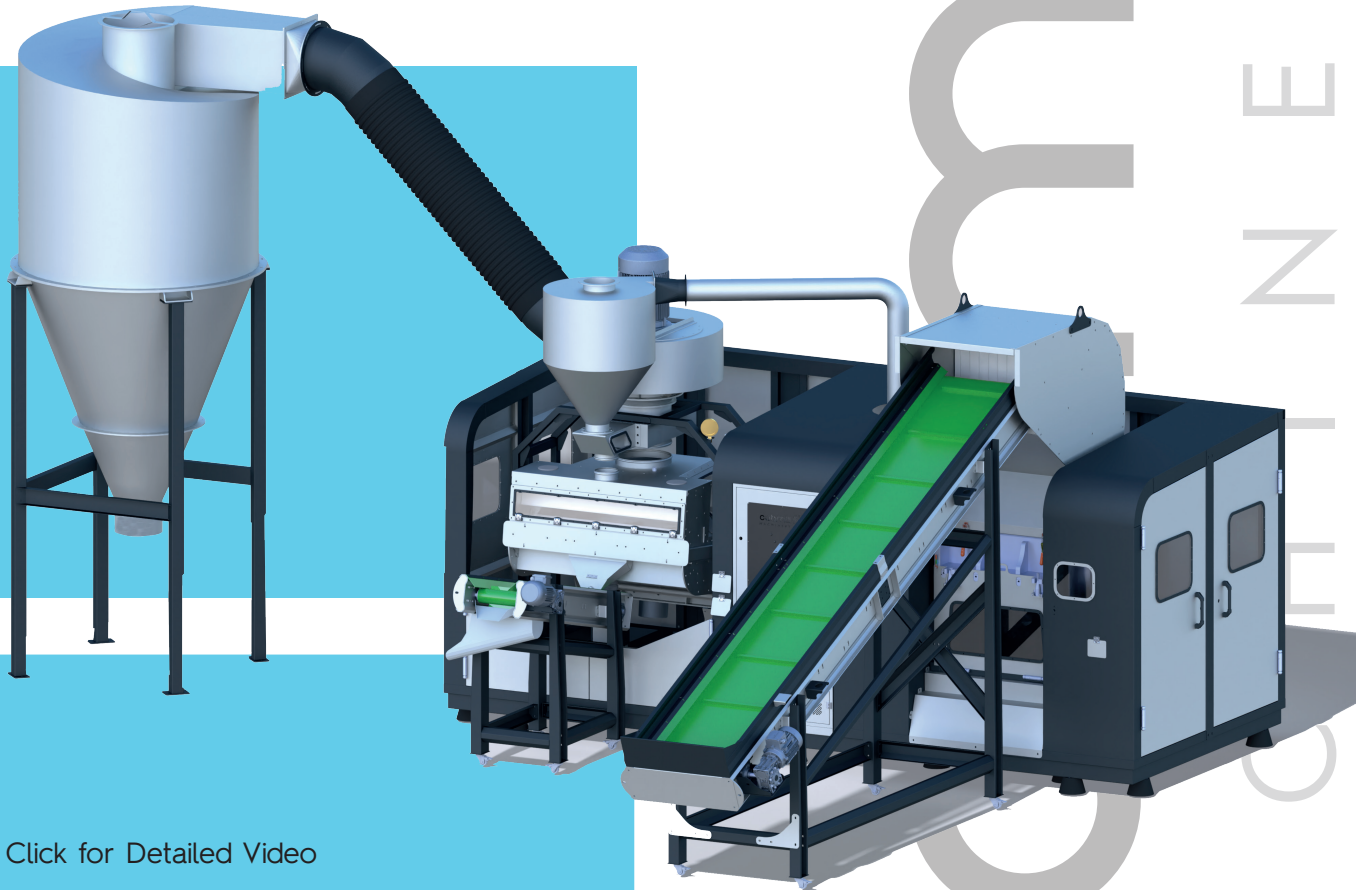
CM series is designed to separate copper and aluminum from external substances in cables. The system is built upon three main components: a granulator, a separator, and fans. The feeding process becomes easier and faster with the optional parts we offer (conveyor belt, shredder) that can be easily integrated into the system. Our state-of-the-art machinery is capable of separating materials from plastic with an extremely high efficiency rate of 99.9%, ensuring an exceptionally pure stream of recovered materials.

SHREDDER

PRODUCT NAME	HOURLY PROCESSING CAPACITY (approximately)	DIMENSION	WEIGHT (kg)	NUMBER OF BLADES	CONVEYOR BELT	MAGNETIC BELT
CM-120 PRO	2000 Kg	930*420*870	11000	4 FIXED 55 ROTARY	AVAILABLE	AVAILABLE
CM-80 PRO	1000 Kg	830*420*870	6500	2 FIXED 35 ROTARY	AVAILABLE	AVAILABLE
CM-12	500 Kg	230*290*650	2900	6 FIXED 48 ROTARY	OPTIONAL	OPTIONAL
CM-8	300 Kg	200*295*430	1500	4 FIXED 32 ROTARY	OPTIONAL	OPTIONAL
SHREDDER	1500 Kg	120*150*200	1000	2 FIXED 18 ROTARY	OPTIONAL	-

CM-120

PROFESSIONAL



■ [Click for Detailed Video](#)

TECHNICAL INFORMATION

Hourly Processing Capacity: **2000 kg/hr approx.**

on 4 mm crushing sieves

Crushing Engine: **90 kw**

Number of Blades: **4 fixed - 55 rotary**

Blade Quality: **SLD magic Japanese steel, special heat treatment**

Separation Unit: **150*120 cm**

Standard Equipment: **2-3-4-5-6 mm crushing sieves, dust cyclone, plastic spiral, loading belt, magnetic discharge belt**

Area Covered: **100 m²**

Dimension: **930*420*870 cm**

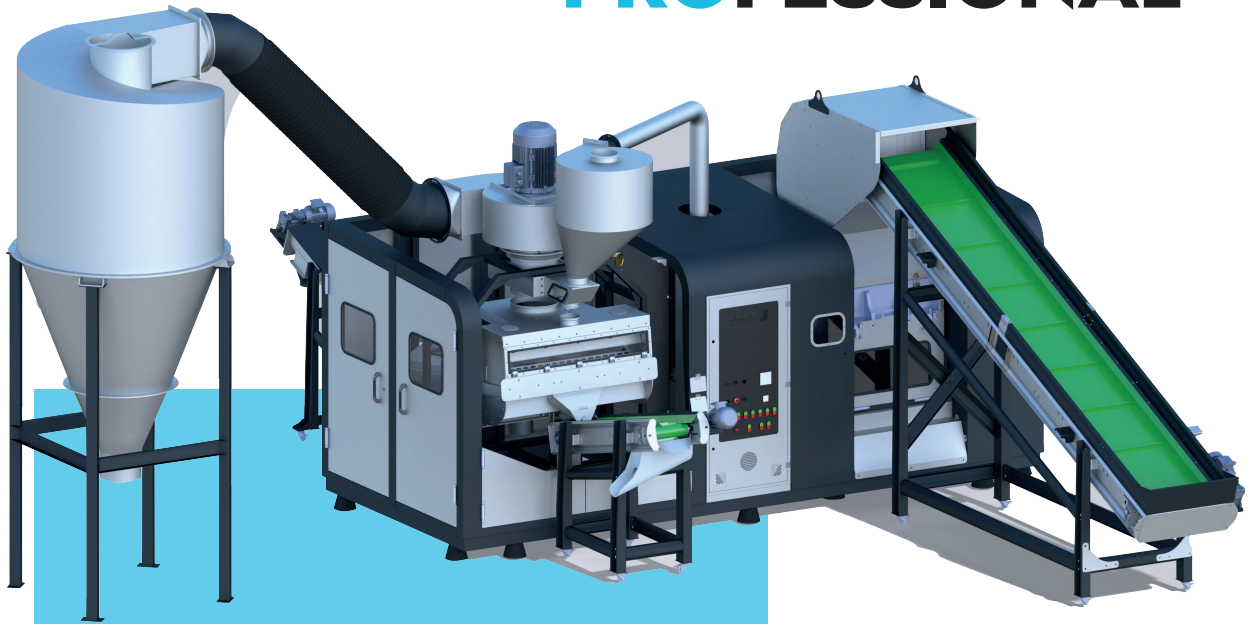
Weight: **11000 kg**

USAGE AREAS

- Copper and aluminum cable
- Electronic waste card
- Rigid plastic
- Auto radiator

- High Productivity
- Durable and Versatile

CM-80 PROFESSIONAL



cabmill
M A C H I N E R Y

■ [Click for Detailed Video](#)

TECHNICAL INFORMATION

Hourly Processing Capacity: **1000 kg/hr approx.**

on 4 mm crushing sieves

Crushing Engine: **55 kw**

Number of Blades: **2 fixed - 35 rotary**

Blade Quality: **SLD magic Japanese steel,
special heat treatment**

Separation Unit: **120*120 cm**

Standard Equipment: **2-3-4-5-6 mm crushing sieves,
dust cyclone, plastic spiral, loading belt,
magnetic discharge belt**

Area Covered: **75 m²**

Dimension: **830*420*870 cm**

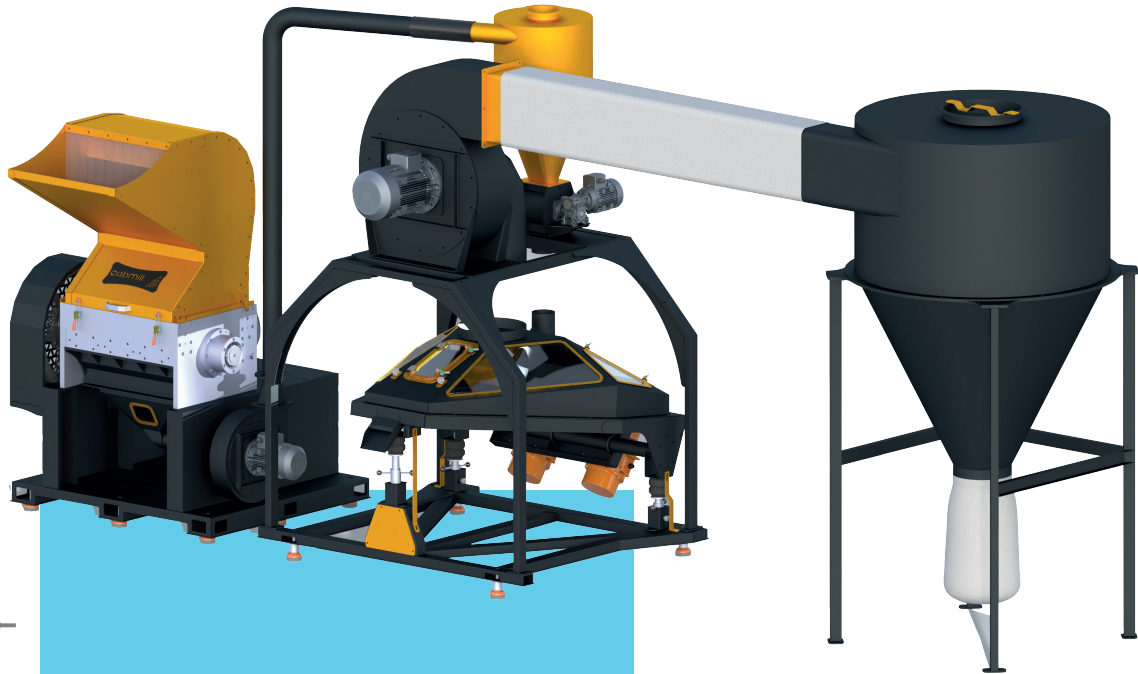
Weight: **6500 kg**

USAGE AREAS

- Copper and aluminum cable
- Electronic waste card
- Rigid plastic
- Auto radiator

- High Productivity
- Durable and Versatile
- Cost Effective

CM-12



cabmill
M A C H I N E R Y

- [Click for Detailed Video](#)

TECHNICAL INFORMATION

Hourly Processing Capacity: **500 kg/hr**

approx. on 4 mm crushing sieves

Crushing Engine: **22 kw**

Number of Blades: **6 fixed - 48 rotary**

Blade Quality: **SLD magic Japanese steel, special heat treatment**

Separation Unit: **145*115 cm**

Standard Equipment: **2-3-4-5-6 mm**

crushing sieves, dust cyclone

Area Covered: **12 m²**

Dimension: **230*290*650 cm**

Weight: **2900 kg**

ADVANTAGES

- Less Energy Consumption
- Small Space Occupancy
- Easy to Use - Ideal for Small Businesses

USAGE AREAS

- Copper and aluminum cable
- Electronic waste card
- Rigid plastic
- Auto radiator

- High Quality
- Cost Effective
- High Technology

CM-8



■ [Click for Detailed Video](#)

TECHNICAL INFORMATION

Hourly Processing Capacity: **300 kg/hr approx.**

on 4 mm crushing sieves

Crushing Engine: **18,5 kw**

Number of Blades: **4 fixed - 32 rotary**

Blade Quality: **SLD magic Japanese steel,
special heat treatment**

Separation Unit: **74*115 cm**

Standard Equipment: **2-3-4-5-6 mm crushing
sieves, dust cyclone**

Area Covered: **10 m²**

Dimension: **200*295*430 cm**

Weight: **1500 kg**

ADVANTAGES

- Less Energy Consumption
- Small Space Occupancy
- Easy to Use - Ideal for Small Businesses

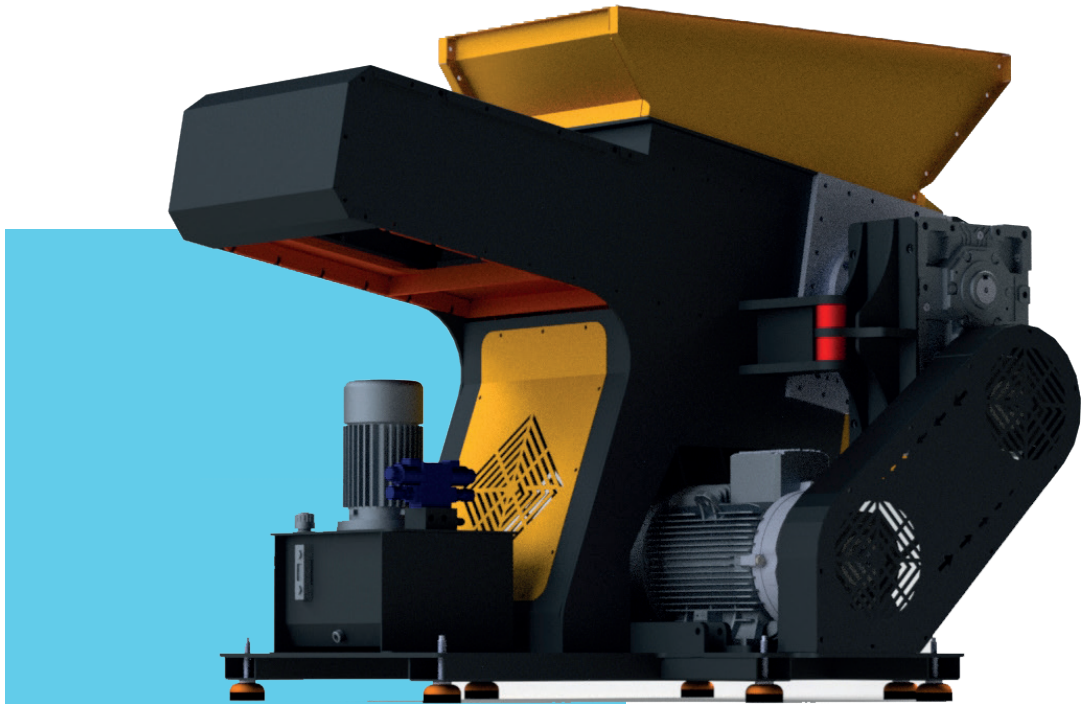
USAGE AREAS

- Copper and aluminum cable
- Electronic waste card
- Rigid plastic
- Auto radiator

- High Quality
- Cost Effective
- High Technology

SHREDDER

cabmill
M A C H I N E R Y



- [Click for Detailed Video](#)

TECHNICAL INFORMATION

Hourly Processing Capacity: **1500 kg/hr approx.**

Crushing Engine: **22 kw**

Number of Blades: **2 fixed - 18 rotary**

Blade Quality: **SLD magic Japanese steel, special heat treatment**

AREA COVERED: **3 m²**

Dimension: **120*150*200 cm**

Weight: **1000 kg**

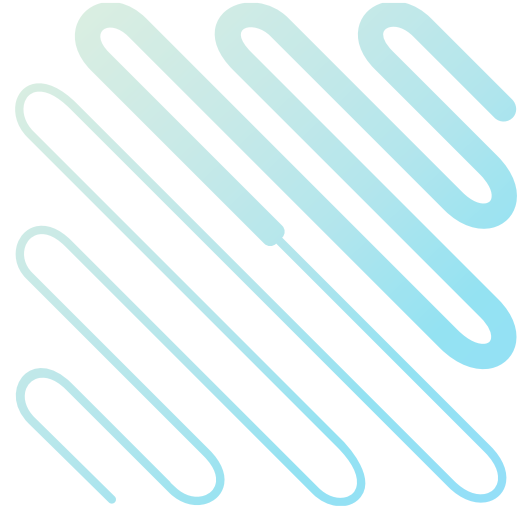
ADVANTAGES

- Less Energy Consumption
- Small Space Occupancy
- Easy to Use

USAGE AREAS

- Copper and aluminum cable
- Electronic waste card
- Rigid plastic
- Auto radiator

- High Quality
- Durable
- PLC Controlled



cabmill M A C H I N E R Y

CONTACT INFORMATION

**Cabmill Makina
Sanayi ve Ticaret
Ltd. Şti.**



Fevziçakmak Mah. 10669. Sk. A Blok
No: 3 Karatay/KONYA



ENGLISH	+ 90 544 933 30 69
NEDERLANDS	+90 534 648 96 37
РУССКИЙ	+7 702 585 9695
العربية	+ 90 533 895 71 19



export@cabmill.com

REFERENCES

VATAN KABLO - BAŐOĐLU KABLO - AY TAR HURDACILIK - SINC MAKİNE -
KEMPAR MAKİNE - AĐAOĐLU HURDAĐILIK - GÖKSAN HURDACILIK - KÜĐÜK
GRUP - CROMMASTER HS COMPANY - TEOS TEKNİK - KAMER ELEKTRİK

OUR SOCIAL MEDIA LINKS

cabmill
M A C H I N E R Y



YouTube



Instagram



LinkedIn



Facebook